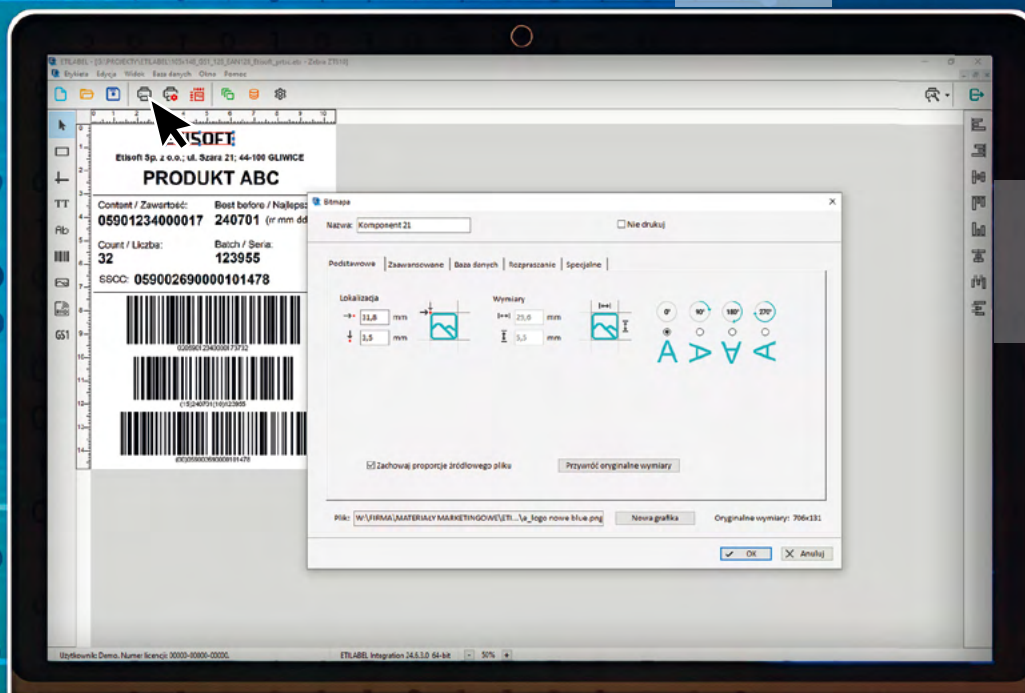


ETISOFT

ETILABEL

- label design and print programme



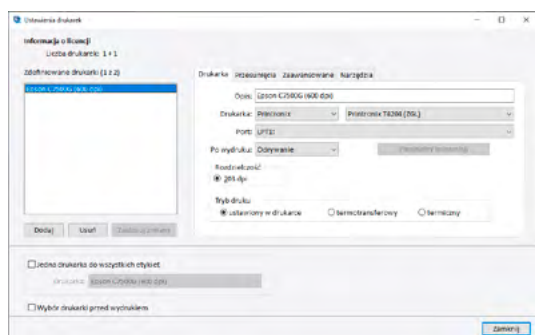


ETILABEL is an easy way to create and print your own self-adhesive labels.

COMMUNICATION WITH PRINTERS

Zebra, Citizen, TSC, Printronix, Honeywell, Toshiba TEC and Epson.

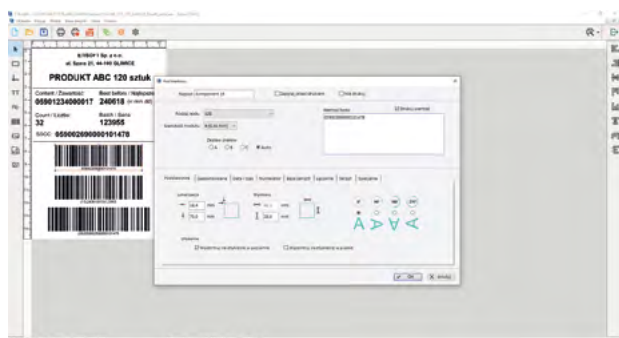
The ETILABEL programme is designed for printing labels on Epson thermal transfer, thermal transfer and colour printers. The programme works with printers using different printing languages ZPL, EPL, DPL, TSPL, TPCL and ESC/Label. The software allows the connection of printers in network mode.



EASY TO USE

ETILABEL is equipped with a new, clear user interface that makes it easy to navigate and use the programme's functions.

The programme enables the quick creation of labels with colour graphics, barcodes and numbering, even by people with no experience of similar software.



A MODERN TOOL

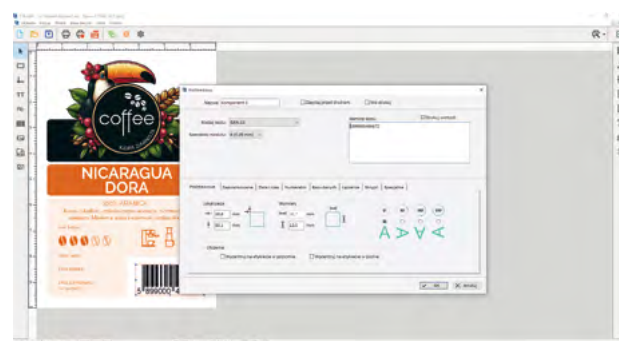
The ETILABEL programme is a modern tool that enables the creation of barcode labels 2D codes, GS1 logistics labels, as well as the encoding and printing of RFID labels.

ETILABEL also allows a label template to be connected to any database.

PRINTING OF COLOUR LABELS

With ETILABEL, colour labels can be quickly and easily generated by inserting graphics (in jpg, png and bmp formats), as well as text and barcodes.

The cooperation with Epson printers allows you to print attractive and clear colour labels yourself.



LIFETIME LICENCE OR SUBSCRIPTION

Payment for the use of ETILABEL is in the form of a subscription for 12 months or as a lifetime licence. Subscription customers have access to free updates, the latest features and patches, as well as technical support.

ETILABEL is a perfect solution for users looking for a simple and professional label printing tool.

ETILABEL is available in 3 versions for users with different needs. From small companies expecting the simplest solutions, to large corporations that require advanced data editing mechanisms and complex printouts.

ETILABEL Starter

The Starter version was created for users expecting simple solutions. The free programme allows the preparation of labels with a basic set of barcodes, text data and colour graphics. An automatic serial number generation function is also available.

The ETILABEL Starter version is free of charge, but the customer can purchase higher versions of the software at any time.

ETILABEL Integration

Integration is a version for the most demanding customers.

ETILABEL Integration gives you the ability to define sets of labels, import data not only from databases, but also from other files, and freely process text and numerical data.

The program ensures easy configuration and integration with the systems used in the enterprise. The built-in Etighost application is used to manage label printing in complex IT systems. It performs print orders transferred by external applications, devices and systems as an operating system service performed on the server. It also has an „Operator Window“ function used in production environments with touch panels.

ETILABEL Integration software enables encoding and printing RFID labels, and also works with printers with a code verifier.

ETILABEL Business

ETILABEL Business is the most frequently selected version of the software.

The software offers a large selection of barcodes and 2D codes, the possibility of using advanced numerators and connecting a label template to the selected database. The programme allows the preparation of logistics labels according to GS1 standards, as well as the encoding and printing of RFID labels.

The software allows printers to be connected in network mode.

See the differences between the versions Starter, Business, Integration or download a programme demo



SCAN ME
learn more

<https://etisoft.eu/solutions/etilabel/>

BARCODE AND 2D LABELS, GS1 LOGISTICS LABELS



COLOUR LABELS



RFID LABELS - ENCODING AND PRINTING





Discover the possibilities
of our software and improve
your label printing processes.



www.etisoft.eu

ETISOFT

Etisoft Sp. z o.o.
Szara 21; 44-100 Gliwice
POLAND
tel.: +48 32 332 80 50
inquiry@etisoft.com.pl

EU VAT: 6312362213
National Court Register: 0000138415
BDO: 000018097
INITIAL CAPITAL: 5 000 000 PLN
etisoft.eu



* dotyczy tylko
wybranych produktów